

Systematic Pipe Rehabilitation

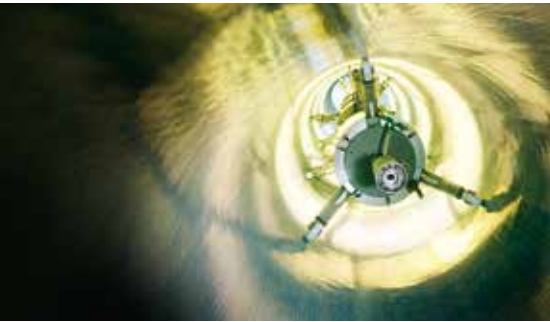


UV Liner

UV Liner



light in the pipe rehabilitation w



Light source for circular sections



Electronic data recording



Egg-shaped section 600/800 before the rehabilitation



Egg-shaped section 600/900 rehabilitated with a GRP inliner

The product

D&S ROHRSANIERUNG has complemented its wide range of products with a hose liner cured with ultraviolet light. This is a multi-layer GRP liner resistant to corrosion and chemicals, which is provided with a film outside and inside. The liner is available with a wall thickness from 3.0 to 15.6 mm. Non-plasticized resins according to DIN 18 820 with forming properties according to

DIN 16 946-2 are used as reaction resins. These are compounded with ultraviolet initiators. All the materials as well as the installation process are subject to an internal and an external quality control within the scope of a quality assurance system. So the company disposes of all the current methods for curing hose liners either with steam, water or ultraviolet light.

The field of application

No matter whether the profiles are circular, angular or egg-shaped, the procedure can be used in defective sewer systems for practically all common cross sections of pipelines in a nominal diameter range from DN 150 to DN 1200 and for egg-shaped profiles from 200/300 to 900/1350.

with GRP inliners



Installation with the conveyor belt

The installation

After the insertion of a sliding film and the mounting of the so-called packer at the liner ends, the hose liner, impregnated with a resin at the factory, is drawn into the reach to be rehabilitated with the aid of a rope winch and then erected by means of compressed air. The subsequent curing with ultraviolet light is completely moni-

red at the light source by a TV camera. As soon as the liner has cooled down, a milling robot opens the existing branch lines. After the required leak test, the pipeline section can normally be taken into operation on the very same workday. The result is a close-fit and leak-proof pipe lining.

The advantages

Right from the beginning of the rehabilitation, the advantages of the trenchless procedure are obvious: there is no excavation and the annoyance of residents, pedestrians and road traffic are kept within limits. The quick execution of construction work convinces just as much as the high flexibility as to sections and nominal diameters. The final product is characterised by a high resistance to chemical and mechanical load, a long lifetime and excellent hydraulic properties.



- BlueLine Procedure
- Burst Lining
- Cement Mortar Lining
- Compact Pipe
- CP-ZA 2012-Top-Hat Profile
- DS-CityLiner
- DS - Hose Relining
- DynTec (close-fit-lining)
- Flexoren Relining
- House and Industry Liner
- Installation Procedures/ Large Profile Rehabilitation
- KA-TE Robotics
- Manual Rehabilitation
- Partial In-Liner
- Pipe Relining (long pipe, short pipe and pipe run)
- Polyester Liner
- Superheated Steam Liner
- UV Liner
- and other procedures

www.dus-rohr.de

DIRINGER & SCHEIDEL
ROHRSANIERUNG GmbH & Co. KG
Wilhelm-Wundt-Straße 19-21
D - 68199 Mannheim

